

NOV
2024



mercy

MESSENGER

NEWS FOR THE DIVINE MERCY FAMILY OF PARISHES



welcome

Maybe we see you every day. Maybe we see you every Sunday.
We are happy you share in the Eucharistic celebration at Mass with us!

Maybe you have been away from the Church for a little while or for quite some time, but now you feel a tug at your heart calling you back to the Catholic Church. Listen to that tug. It's your Heavenly Father reaching his arms out to you, the Holy Spirit whispering in your ear, hoping to draw you home.

We hope you accept this as your invitation to rediscover the truth, wonder and mystery of the Catholic faith. As your brothers and sisters in our Catholic family, we want you back. We've missed you!

Regardless of why you left or got out of the habit of going to Mass, you can always come home and return to the practice of the Sacraments and the fullness of relationship with Jesus Christ and the Church he founded.

Stewardship

Stewardship is a lifestyle rooted in gratitude and generosity; recognizing that everything we have and everything we are is a gift from God and being grateful and generous with those gifts. We aren't "owners" of anything, we are merely "stewards" of the gifts that God has given us.

Prayer - Spending Time with God

Recognizing that every day is a gift from God, we strive to spend some of each day with God through prayer asking God how He wants us to use the gifts He has given to us.

Participation - Sharing Talent

Recognizing that God has given each individual unique skills and talents, we strive to share our own talents.

Generosity - Giving Treasure

Giving time and talent does not excuse us from giving treasure. Jesus challenged us to give as it has been given to us. We strive to give generously to support the building up of God's kingdom. Although a 10% tithe may not be immediately possible, taking small incremental steps shows our desire to be generous to God as He has been generous to us.

Sharing our gifts helps us keep God first in everything, and from putting other "gods" before God. When we align our actions with God's plan and use our gifts in the way God intended, our lives become transformed with Joy!

“It is more blessed to **give** than to receive”
-Acts 20:35



You have the opportunity to provide Christmas joy to others this holiday season by choosing ornaments from the Giving Trees at all of our parishes. Trees will be up November 16/17 and gifts are due back the weekend of December 7/8.

St Joseph

Gift wishes include toys, clothing and games for needy children in the Three Rivers Community.

St Jude

Recipients of these gifts are Little Brothers-Friends of the Elderly, North/South Fairmount, and Community Matters.

Visitation

There are gift items and gift card options for St Vincent de Paul, St Martin's, and St Leo.

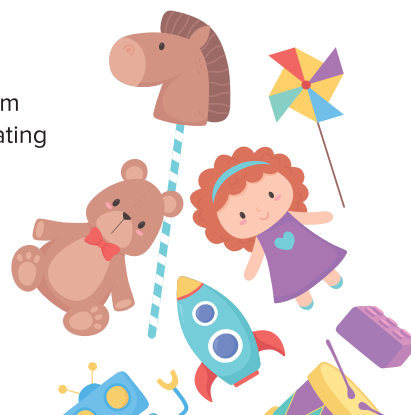
Giving TREE

Your generosity is a kindness that will extend beyond the holiday season for so many!

ST LEO TOY DRIVE

We are collecting items for St Leo Church from now until **December 8**. Please consider donating new or gently used toys, clothing, bedding, household items, and towels.

Drop off before and after Masses at the Visitation Canteen, or in collection boxes at St Joseph & St Jude. If you are considering a large donation, call or text Lynn Hensler to make arrangements at 513-519-3368.



St. Vincent de Paul will be collecting non-perishable food items at the **Thanksgiving Day 9:00 Mass at St Jude**. Thanks for your support!



christmas cookie collection

The Jail Ministry at Visitation will be collecting cookies for the inmates in the Hamilton County Correction System. **Please bring your cookies to the Visitation Welcome Center on December 14 & 15.**

For details, contact Tim Gates at 513-941-5417

ST JOSEPH LADIES SOCIETY ANNUAL

Cookie Sale

Saturday, December 7 9:00 am

Doors open until the cookies sell, or 1:00 pm, whichever comes first. The proceeds allow the Ladies Society to fund the \$7,000 per year spent on missalettes, hosts, wine, candles, ashes, palms, and the Easter Candle.

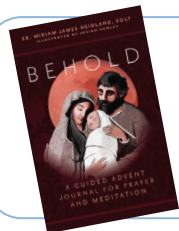


upcoming EVENTS



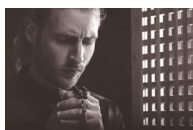
NIGHT OF MERCY

We invite you to come encounter Jesus in the Eucharist, be united in prayer with parishioners in our Family of Parishes, and be filled with hope at our Night of Mercy event **Thursday, November 21** from 7:00-8:30 pm at Visitation. Join us for Confessions (6:30-8:30 pm), Adoration, Contemporary Music, and guest speaker Mother Seraphina, who grew up Catholic but drifted from the faith to pursue a music career in New York City. She is now Mother Superior for the Franciscan Daughters of Mary.



ADVENT BOOK STUDY

This is a wonderful opportunity to slow down during this busy time of the year and keep the focus on Jesus with a guided journal for prayer and meditation - BEHOLD by Sr. Miriam James Heidland, SOLT. **Kickoff event on Sunday, November 24 at 1:00 pm** at St. Joseph Church to receive your book and go through the introduction session of the study. *Details at www.divinemeracyfam.org



CONFESSION OPPORTUNITIES (in addition to regular Saturday times)

Thursday, November 21 at Night of Mercy, 6:30-8:30 pm at Visitation

Wednesday, December 4 - 4:00-6:00 pm at Visitation

Wednesday, December 11 at The Surrender Initiative, 6:00-7:00 pm at St Joseph



IMMACULATE CONCEPTION

Monday, December 9 is a Holy Day of Obligation. Mass Schedule:

8:00 am at St Joseph, 8:30 am at St Jude and Visitation (school Masses)

12 noon at Visitation, and 7:00 pm at St Jude



THE SURRENDER INITIATIVE

For those experiencing the heartache of seeing a loved one drift away from the faith, we invite you to join us for our new Surrender Initiative. We will come together for Mass throughout the year to pray intentionally and dedicate our Mass prayers and sacrifices for those we love who are no longer practicing their faith. **The first Surrender Initiative is December 11** at St Joseph; Mass at 7:00 pm with a Litany for Conversion at 6:50 pm. Confessions will be available from 6:00-7:00 pm.

Mark your calendar for additional dates: March 12, 2025 and June 18, 2025



BAMBINELLI BLESSING

There will be a special blessing of the "Bambinelli" [Baby Jesus figurines] on **December 14 & 15** at all Masses. All children and adults are invited to bring a figurine of the baby Jesus, particularly from their family Nativity Crèche, to be blessed at any Mass in the Divine Mercy Family of Parishes.

DON'T MISS OUT!

We have acquired a free software that will allow us to reach parishioners not only with weekly news and unique opportunities, but also with urgent messages like an unexpected Mass change. **Please use the QR code** to indicate your contact preferences or return the slip below in the collection basket, or at the parish / school offices. Include all members of your household who would like messaging. Thank you!

Yes, please include me in

email updates: _____

text updates: _____

USPS mail: _____

Name: _____

I'm registered at: St Joseph St Jude Visitation



DIVINE MERCY FAMILY FINANCIAL REPORT

July 1, 2023 to June 30, 2024

Dear Parishioners,

The Divine Mercy Family annual financial report from the past fiscal year for each of our parishes can be found below. The financial report shows that each parish realized revenues over expenses in excess of their budgets for the 2023-2024 fiscal year. The budgets for each parish for the fiscal year 2024-2025 are projected to also be positive but significantly less than 2023-2024.

The costs to retain and attract qualified teachers at our schools continues to increase and costs in general continue to rise. Contributions will need to increase to ensure the financial stability our parishes and the ability of our parishes to continue to subsidize our schools.

Please know that your giving is an act of gratitude to God which helps to sustain our growing parish ministries and strengthens the growing needs for the education of our children. As we continue our journey through Beacons of Light and enter into year 3, we are focusing on the challenges ahead as we move toward becoming one canonical parish.

Together, let us respond to God's blessings with joyful hearts, knowing that every gift contributes to the vitality of our parishes and always remember that God will not be outdone in generosity for He is infinitely generous and will always exceed the generosity we show toward Him and others.

Thank you for your support and may God bless you and your families in the year ahead.

Fr. Don Siciliano - Pastor

Quint Robinson - Director of Administration & Operations

Heidi Heinrich - Finance & Stewardship Manager

Leslee House - Accounting Manager - Revenue & Tuition

Ken Schultz - Accounting Manager - Payables & Payroll

St. Jude Parish

- The financial situation at St. Jude Parish was positive for 2023-2024 with \$175,237 in profit compared to the 2022-2023 loss of (\$7,653). The projected profit for 2024-2025 is \$5,910 mainly due to the increasing costs of payroll and benefits that exceed tuition increases.
- Collections were up by only \$2,250 over the previous year.
- Tuition saved by school families from EdChoice Scholarships equaled \$1,274,350 however there was no increase in contributions from school families in 2023-2024.
- Tuition increased from the previous year by \$529,760 due to reduced financial aid, tuition increases, enrollment changes and \$313,240 from EdChoice Scholarships.
- Expenses increased from the previous year by \$23,130 for the church and \$417,990 for the school due to mainly to higher payroll and benefit costs, administrative costs to the school related to the EdChoice program and unexpected repairs at the school.

Visitation Parish

- The financial situation at Visitation Parish was positive for 2023-2024 with \$230,635 in profit compared to the 2022-2023 loss of (\$67,983). The projected numbers for 2024-2025 show a profit of \$176,265 mainly due to increasing costs including payroll and benefits that exceed tuition increases.
- Collections were down by (\$32,300) from the previous year.
- Tuition saved by school families from EdChoice Scholarships equaled \$1,784,980 however there was no increase in contributions from school families in 2023-2024.
- Tuition increased from the previous year by \$477,100 due to reduced financial aid, tuition increases, enrollment changes and \$312,370 from EdChoice Scholarships.
- Expenses decreased from the previous year by (\$79,550) for the church and increased by \$202,190 for the school due mainly to higher payroll and benefit costs, administrative costs to the school related to the EdChoice program and repairs at the school.

| Our Lady of the Visitation Parish | | | | | | | |
|--------------------------------------|---------------------|---------------------|---------------------|--------------------------------------|---------------------|---------------------|---------------------|
| | BUDGET | ACTUAL | BUDGET | | BUDGET | ACTUAL | BUDGET |
| | 2023-2024 | 2023-2024 | 2024-2025 | | 2023-2024 | 2023-2024 | 2024-2025 |
| Church Revenues: | | | | School Revenues: | | | |
| Sunday & Holyday Collections | \$ 1,470,000 | \$ 1,459,996 | \$ 1,513,000 | Tuition & Fees | \$ 3,157,125 | \$ 3,391,499 | \$ 3,736,475 |
| Festival/Other Fundraising (Net) | 122,500 | 140,423 | 141,000 | Outside Scholarships & Aid | 34,000 | 83,000 | 24,000 |
| Other Donations | 47,000 | 49,164 | 49,000 | After Care/Prof Fees/Cafeteria | 50,000 | 120,855 | 109,900 |
| Religious Formation Fees | 8,000 | 4,600 | 8,000 | Donations/Rebates | 35,000 | 45,017 | 32,000 |
| Archdiocesan Rebates | 50,000 | 61,750 | - | State Admin Cost Reimbursement | 300,000 | 302,911 | 300,000 |
| All Other Revenue | 40,000 | 51,786 | 51,500 | Total School Revenue | \$ 3,576,125 | \$ 3,943,282 | \$ 4,202,375 |
| Total Church Revenues | \$ 1,737,500 | \$ 1,767,719 | \$ 1,762,500 | | | | |
| Church Expenses: | | | | School Expenses: | | | |
| Salaries & Benefits | \$ 695,800 | \$ 687,786 | \$ 628,880 | Salaries & Benefits | \$ 3,206,403 | \$ 3,349,360 | \$ 3,531,780 |
| Office-Rectory- Church | 193,150 | 228,798 | 234,600 | Administrative-Other | 172,600 | 165,044 | 255,130 |
| Archdiocesan Assessments | 175,000 | 166,554 | 167,200 | Preschool Expenses | 206,200 | 209,145 | 234,260 |
| Religious Formation Expenses | 16,700 | 18,303 | 21,500 | Plant Expenses & Utilities | 509,500 | 533,145 | 600,460 |
| Interest Expense | 6,000 | 13,213 | 14,000 | Total School Expenses | \$ 4,094,703 | \$ 4,256,694 | \$ 4,621,630 |
| Plant Expenses & Utilities | 144,000 | 109,018 | 100,800 | School Revenues less Expenses | \$ (518,578) | \$ (313,412) | \$ (419,255) |
| Total Church Expenses | \$ 1,230,650 | \$ 1,223,672 | \$ 1,166,980 | | | | |
| Church Revenues less Expenses | \$ 506,850 | \$ 544,047 | \$ 595,520 | TOTAL PARISH NET INCOME | \$ (11,728) | \$ 230,635 | \$ 176,265 |

| St. Jude Parish | | | | | | | |
|--------------------------------------|---------------------|---------------------|---------------------|--------------------------------------|---------------------|---------------------|---------------------|
| | BUDGET | ACTUAL | BUDGET | | BUDGET | ACTUAL | BUDGET |
| | 2023-2024 | 2023-2024 | 2024-2025 | | 2023-2024 | 2023-2024 | 2024-2025 |
| Church Revenues: | | | | School Revenues: | | | |
| Sunday & Holyday Collections | \$ 825,000 | \$ 827,836 | \$ 825,000 | Tuition & Fees | \$ 1,891,000 | \$ 2,324,531 | \$ 2,537,645 |
| Festival/Other Fundraising (Net) | 185,000 | 167,072 | 164,000 | Outside Scholarships & Aid | 56,000 | 69,200 | 24,000 |
| Other Donations | 35,000 | 38,471 | 35,000 | After Care/Prof Fees/Cafeteria | 65,000 | 76,689 | 73,000 |
| Religious Formation Fees | 4,500 | 3,430 | 4,500 | Donations/Rebates | 10,000 | 23,082 | 14,000 |
| Archdiocesan Rebates | - | - | - | State Admin Cost Reimbursement | 205,000 | 218,061 | 215,000 |
| All Other Revenue | 20,000 | 26,988 | 25,000 | Total School Revenue | \$ 2,227,000 | \$ 2,711,563 | \$ 2,863,645 |
| Total Church Revenues | \$ 1,069,500 | \$ 1,063,797 | \$ 1,053,500 | | | | |
| Church Expenses: | | | | School Expenses: | | | |
| Salaries & Benefits | \$ 436,000 | \$ 397,515 | \$ 459,860 | Salaries & Benefits | \$ 2,226,000 | \$ 2,352,112 | \$ 2,721,375 |
| Office-Rectory- Church | 150,500 | 152,521 | 138,200 | Administrative-Other | 109,000 | 189,868 | 190,800 |
| Archdiocesan Assessments | 110,000 | 100,512 | 101,000 | Plant Expenses & Utilities | 110,000 | 220,225 | 207,900 |
| Religious Formation Expenses | 15,000 | 3,487 | 8,500 | Extraordinary Improvements | - | 76,043 | |
| Interest Expense | 4,000 | 2,861 | 2,500 | Total School Expenses | \$ 2,445,000 | \$ 2,838,248 | \$ 3,120,075 |
| Plant Expenses & Utilities | 142,000 | 104,979 | 81,100 | School Revenues less Expenses | \$ (218,000) | \$ (126,685) | \$ (256,430) |
| Total Church Expenses | \$ 857,500 | \$ 761,875 | \$ 791,160 | | | | |
| Church Revenues less Expenses | \$ 212,000 | \$ 301,922 | \$ 262,340 | TOTAL PARISH NET INCOME | \$ (6,000) | \$ 175,237 | \$ 5,910 |

St. Joseph Parish

- The financial situation at St. Joseph Parish improved or 2023-2024 with \$101,698 in profit compared to the 2022-2023 loss of (\$102,412). The projected profit for 2024-2025 is \$55,000.
- Collections were up by \$84,300 over the previous year.
- Expenses were \$122,990 lower, mainly due to reduced salaries and benefits.
- Expenses for 2024-2025 and 2025-2026 will be increasing due to the required replacement of 2 air conditioning units at an estimated cost of \$35,000 each. One will be replaced each year in order to spread out the costs but collections will need to increase to cover these costs and continue to build up the Parish's operating cash balances to be financially stable.

| St. Joseph Parish | | | |
|--------------------------------------|-------------------|-------------------|-------------------|
| | BUDGET | ACTUAL | BUDGET |
| | 2023-2024 | 2023-2024 | 2024-2025 |
| Church Revenues: | | | |
| Sunday & Holyday Collections | \$ 598,000 | \$ 655,138 | \$ 640,000 |
| Festival/Other Fundraising (Net) | 5,400 | 4,969 | 4,000 |
| Other Donations | 15,400 | 17,512 | 16,000 |
| Religious Formation Fees | 6,200 | 635 | 3,600 |
| Archdiocesan Rebates | 16,000 | 19,790 | 4,000 |
| All Other Revenue | 2,700 | 34 | - |
| Total Church Revenues | \$ 643,700 | \$ 698,078 | \$ 667,600 |
| Church Expenses: | | | |
| Salaries & Benefits | \$ 411,600 | \$ 393,031 | \$ 364,580 |
| Office-Rectory- Church | 58,400 | 45,441 | 52,620 |
| Archdiocesan Assessments | 60,000 | 56,868 | 62,000 |
| Religious Formation Expenses | 7,200 | 3,328 | 6,400 |
| Plant Expenses & Utilities | 86,000 | 97,712 | 127,000 |
| Total Church Expenses | \$ 623,200 | \$ 596,380 | \$ 612,600 |
| Church Revenues less Expenses | \$ 20,500 | \$ 101,698 | \$ 55,000 |
| TOTAL PARISH NET INCOME | \$ 20,500 | \$ 101,698 | \$ 55,000 |

DIVINE MERCY FAMILY CONTRIBUTIONS REPORT

We are all called to be stewards of the gifts with which we have been blessed by God and to give of our time, talent, and treasure in gratitude for those gifts. As you can see by the schedules below, we have many parishioners who are giving generously from their financial resources and we are grateful for this; however, there are many more who could possibly look at their financial situation and determine if their contributions to the Church are reflective of the gifts they have received. In what category do your annual contributions fall? Do your contributions reflect the gratitude you wish to show to God for the blessings you have received?

Contributions from Registered Parish Families July 2023 to June 2024

Our Lady of the Visitation Parish

| # of Families | Annual Contributions | % of Families | Contributions | % of Contributions |
|---------------|----------------------|---------------|---------------|--------------------|
| 1358 | Give \$0 | 53.1% | \$ - | 0.0% |
| 352 | \$1 to \$300 | 13.7% | \$ 51,295 | 3.3% |
| 240 | \$301 to \$600 | 9.4% | \$ 117,710 | 7.6% |
| 151 | \$601 to \$1,000 | 5.9% | \$ 122,585 | 7.9% |
| 278 | \$1,001 to \$2,000 | 10.9% | \$ 380,115 | 24.6% |
| 140 | \$2,001 to \$5,000 | 5.5% | \$ 420,720 | 27.2% |
| 25 | \$5,001 to \$8,000 | 1.0% | \$ 156,395 | 10.1% |
| 14 | \$8,001 to \$50,000 | 0.5% | \$ 299,092 | 19.3% |
| 2558 | | 100.0% | \$ 1,547,912 | 100.0% |

81% of the Total Annual Contributions are Given by 18% of the Parish Families

62% of the Total Annual Contributions are Given by Parishioners 60+ Years Old

St. Jude Parish

| # of Families | Annual Contributions | % of Families | Contributions | % of Contributions |
|---------------|----------------------|---------------|---------------|--------------------|
| 617 | Give \$0 | 45.8% | \$ - | 0.0% |
| 280 | \$1 to \$300 | 20.8% | \$ 34,075 | 4.2% |
| 128 | \$301 to \$600 | 9.5% | \$ 59,134 | 7.3% |
| 85 | \$601 to \$1,000 | 6.3% | \$ 67,751 | 8.4% |
| 145 | \$1,001 to \$2,000 | 10.8% | \$ 198,109 | 24.5% |
| 75 | \$2,001 to \$5,000 | 5.6% | \$ 215,379 | 26.7% |
| 8 | \$5,001 to \$8,000 | 0.6% | \$ 45,020 | 5.6% |
| 8 | \$8,001 to \$70,000 | 0.6% | \$ 188,005 | 23.3% |
| 1346 | | 100.0% | \$ 807,473 | 100.0% |

80% of the Total Annual Contributions are Given by 18% of the Parish Families

68% of the Total Annual Contributions are Given by Parishioners 60+ Years Old

St. Joseph Parish

| # of Families | Annual Contributions | % of Families | Contributions | % of Contributions |
|---------------|----------------------|---------------|---------------|--------------------|
| 135 | Give \$0 | 26.3% | \$ - | 0.0% |
| 94 | \$1 to \$300 | 18.3% | \$ 12,418 | 2.0% |
| 50 | \$301 to \$600 | 9.7% | \$ 22,557 | 3.6% |
| 49 | \$601 to \$1,000 | 9.5% | \$ 40,137 | 6.4% |
| 94 | \$1,001 to \$2,000 | 18.3% | \$ 136,482 | 21.7% |
| 73 | \$2,001 to \$5,000 | 14.2% | \$ 223,161 | 35.6% |
| 11 | \$5,001 to \$7,000 | 2.1% | \$ 66,850 | 10.6% |
| 8 | \$7,001 to \$40,000 | 1.6% | \$ 126,111 | 20.1% |
| 514 | | 100.0% | \$ 627,716 | 100.0% |

88% of the Total Annual Contributions are Given by 36% of the Parish Families

72% of the Total Annual Contributions are Given by Parishioners 60+ Years Old

BEACONS *of* LIGHT

Year 2 In Review-Pastoral Planning Pathway

EUCHARIST

On a normal Sunday, most of the Masses do not meet the 50% threshold mostly because of the size of the church at St. Jude and Visitation. St. Joseph is over 50% at both of their Masses for the Sunday Obligation. We continue to look at how we can adjust the Mass schedule but changing it to meet this requirement will be very difficult. We also continue to struggle with volunteers for the ministries of Extraordinary Ministers and Lectors. We do provide training for each ministry.

CHURCH

We have offered numerous opportunities to increase prayer and discernment in our Family of Parishes including 40 Hours of Eucharistic Adoration, a Night of Mercy, Mass for Anointing of the Sick, and a Rosary Rally. Our Leadership Team, Family Parish Council, and parishioners attended a VISIO Day to brainstorm the Vision for our Family. We have hired a full-time missionary disciple to work with our parishioners to equip them to be disciples first to their own families.

LEADERSHIP

The Family Leadership Team continues to meet with Fr. Don on a weekly basis, brainstorming ideas regarding the unification of our Family of Parishes. We have formed a Family Pastoral Council with 3 members from each of our 3 Parishes. Our Director of Schools works closely with our principals, meeting on a weekly basis. Very soon our Finance meetings will consist of 3 members selected from the individual councils to attend a joint Finance meeting.

STEWARDSHIP

In the upcoming months, we will take the first steps toward forming our parishioners to be disciples who grow in gratitude and become willing to share their time, talents, faith and resources. We will develop and implement an annual plan for Stewardship activities focusing on hospitality and welcome, education, and formation of Stewardship as a way of life.

EVANGELIZATION

Our Evangelization Team is discerning the best way to form parishioners as missionary disciples and hope to pilot a new ministry for adults that will be a part of our discipleship pathway. A new Family Faith Formation replaced the CCD, PREP, and PSR programs. This new program partners with parents and prioritizes their faith formation so they can form their own children. This year we are also beginning to implement a marriage catechumenate.

WORKS OF MERCY (LOVE IN ACTION)

Our Family of Parishes is already providing a lot of opportunities in this area. We are revamping a few ministries, connecting different groups to work together, and helping all of our ministries become more focused on the Family of Parishes rather than one parish.

One of the most challenging parts of the Beacons process is that due to the size of our Family of Parishes and their responsibilities, our Pastor and priests are not able to get to know our parishioners on a personal level. This disconnection between priest and parishioner is a constant challenge that they are very aware of and are striving to remedy. On a positive note, we are working to revitalizing ministries and promoting collaboration. By focusing on the Works of Mercy and uniting ministries across parishes, we are creating a more unified and vibrant parish community.





Non-Profit Org.
U.S. POSTAGE
PAID
Cincinnati, Ohio
Permit No. 3474

Our Lady of the Visitation
3172 South Road
Cincinnati, OH 45248

We look forward to welcoming you and your family
at Mass this Christmas!

Tuesday, Dec 24

Christmas Eve

| | | |
|----------|------------|------------|
| 3:00 pm | St Joseph | Fr Nolker |
| 3:00 pm | Visitation | Fr Don |
| 3:00 pm | St Jude | Fr George |
| 5:00 pm | St Joe | Fr Jerry |
| 10:00 pm | Visitation | Fr Bachman |

Wednesday, Dec 25

Christmas Day

| | | |
|----------|------------|------------|
| 8:00 am | Visitation | Fr Jerry |
| 9:00 am | St Joseph | Fr Don |
| 10:00 am | St Jude | Fr Bachman |

join us



www.divinemeracyfam.org



Divine Mercy Family



divinemeracyfam